

CASIO COMPUTER CO., LTD.

6-2, Hon-machi 1-chome

Shibuya-ku, Tokyo 151-8543, Japan

Telephone: +81-3-5334-4771

Facsimile: +81-3-5334-4656

URL: <http://world.casio.com/system/pa/>

CASIO[®]

PA TECHNICAL BULLETIN

Technical Bulletin No. : TB-PA-2006001

Date: January 16th, 2006

MODEL: DT-300, DT-900, DT-X5, DT-X10 and IT-3000

SUBJECT: Notices on software related to the new RoHS-compliant models

Dear CASIO Distributors,

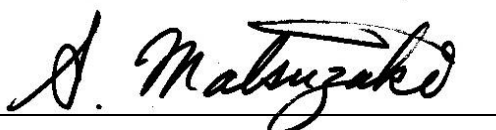
This bulletin explains some software changes on the new RoHS-compliant models. RoHS-compliant models comply with the RoHS (Restriction of the Use of Certain Hazardous Substances in Electrical and Electronic Equipment) directive (*). Please refer to the Sales Bulletin, No.SB-PA-2006001 for information on RoHS-compliant models, the release timing of each model and how to distinguish them from current models.

Basically **application software developed for the current models will be installed in RoHS-compliant models without any problem (application software compatible).**

Therefore, you can offer RoHS-compliant models to your current user sites and use them together with current non-RoHS-compliant models.

For details of software changes on RoHS-compliant models, please read the following pages.

* The RoHS directive requires that manufacturers of electrical and electric devices placed on the market after July 1st, 2006 limit use of hazardous substances. Products offered for sale in the European Union after July 1st, 2006 should comply with it.



Akira MATSUZAKI

General Manager

Overseas Marketing and Sales Department

System Solution Products HQ.

1. Software Change

In order to comply with the RoHS directive, it was necessary to replace laser scanner modules and CMOS imager modules. Characteristics of the new modules are slightly different from the current ones and it was necessary to make some changes to the scanner control software in order to maintain the compatibility of application software. As a result, OS, Service Pack and Patch File are updated and newly released. The following tables show software versions of RoHS-compliant models. The models which need to change the software are listed on the tables.

Laser Scanner Model

Model	DT-900 M61E	DT-900 M60E	DT-X5 M10E	DT-X5 M10R
Description	8MB, Straight	8MB Bent	Bluetooth	Bluetooth WLAN
Laser Module				
Current	VLM-3702	VLM-3702	VLM-3800	VLM-3800
RoHS	VLM-3900	VLM-3900	VLM-3900	VLM-3900
Current Software Preinstalled at Factory				
OS	2.20	2.20	4160	4160
Service Pack	-	-	-	-
Patch	-	-	-	-
RoHS-Compliant Model Software Preinstalled at Factory				
OS	2.20M	2.20M	4160	4160
Service Pack	-	-	-	-
Patch	-	-	-	-
New Laser Patch	-	-	1.00	1.00
RoHS Mark				
Body	Revision Label R/H	Revision Label R/H	Revision Label R/H	Revision Label R/H
Individual Carton Box	R/H Mark	R/H Mark	R/H Mark	R/H Mark
Master Carton Box	R/H Mark	R/H Mark	R/H Mark	R/H Mark

Table 1 RoHS-compliant models with laser scanner

As for the following models, only the laser modules will be changed and the software will not be changed.

DT-300M60E : VLM-4000→VLM-4132

IT-500M30,M30B,M30CB,M30R2,M30F2,M30CR2,M30CF2: VLM-4100→VLM-4130

DT-X10M10E,M10RC2 : VLM-4100→VLM-4130

CMOS Imager Model 1/2

Model	DT-X10 M30E	DT-X10 M30U	DT-X10 M30RC2	DT-X10 M30URC2
Description			WLAN Toyota Module	WLAN Toyota Module
CMOS Imager Module				
Current	IT4000 SR-13	IT4000 SR-13	IT4000 SR-13	IT4000 SR-13
RoHS	IT5000 SR-120R	IT5000 SR-120R	IT5000 SR-120R	IT5000 SR-120R
Current Software Preinstalled at Factory				
OS	4139	4139	4139	4139
Service Pack	2.02	2.02	2.02	2.02
Patch	007	007	007	007
Patch for WLAN Module	-	-	1.00	1.00
RoHS-Compliant Model Software Preinstalled at Factory				
OS	4139	4139	4139	4139
Service Pack	2.02	2.02	2.02	2.02
Patch	007	007	007	007
Patch for WLAN Module	-	-	1.00	1.00
CMOS Imager Patch	1.00	1.00	1.00	1.00
RoHS Mark				
Body	Revision Label R/H	Revision Label R/H	Revision Label R/H	Revision Label R/H
Individual Carton Box	R/H Mark	-	R/H Mark	-
Master Carton Box	R/H Mark	-	R/H Mark	-

Table 2 RoHS-compliant models with CMOS Imager 1/2

CMOS Imager Model 2/2

Model	IT-3000 M55E	IT-3000 M55U	IT-3000 M56E	IT-3000 M56U	DT-X5 M30E	DT-X5 M30U	DT-X5 M30R
Description	MCR	MCR					WLAN
CMOS Imager Module							
Current	C4300 SF-11	C4300 SF-11	C4300 SF-11	C4300 SF-11	C4300 SF-13	C4300 SF-13	C4300 SF-13
RoHS	IT5300 SF-015R	IT5300 SF-015R	IT5300 SF-015R	IT5300 SF-015R	IT-5300 SF-025R	IT-5300 SF-025R	IT-5300 SF-025R
Current Software Preinstalled at Factory							
OS	4563	4563	4563	4563	4164	4164	4164
Service Pack Patch	-	-	-	-	-	-	-
RoHS-Compliant Model Software Preinstalled at Factory							
OS	4563	4563	4563	4563	4164	4164	4164
Service Pack	1.00	1.00	1.00	1.00	-	-	-
Patch	-	-	-	-	-	-	-
CMOS Imager Patch	-	-	-	-	1.00	1.00	1.00
RoHS Mark							
Body	Revision Label R/H	Revision Label R/H	Revision Label R/H	Revision Label R/H	Revision Label R/H	Revision Label R/H	Revision Label R/H
Individual Carton Box	R/H Mark	-	R/H Mark	-	R/H Mark		R/H Mark
Master Carton Box	R/H Mark	-	R/H Mark	-	R/H Mark		R/H Mark

Table 3 RoHS-compliant models with CMOS Imager 2/2

2. Details of Software Change

- Laser Scanner Model

1. DT-900 Series

The OS was modified to support the new laser scanner module.

2. DT-300

It was not necessary to change the laser scanner controller but the flash memory controller due to the incompatibility of the new flash memory.

3. DT-X5 Series

A new laser patch was added to support the new laser scanner module.

- CMOS Imager Model

1. DT-X10 Series

The CMOS imager controller was modified by CMOS Imager Patch 001 to support the new CMOS imager.

If some patches have been installed already, perform a full reset on the terminal to make the CMOS imager patch to be installed.

2. IT-3000 Series

Service Pack 1.00 contains the following patches:

- Patch 6.00
- Printer Patch 1.01
- MCR Patch 2.00
- CMOS Imager Patch

3. DT-X5 Series

The CMOS imager controller was modified by CMOS Imager Patch 001 to support the new CMOS imager.

If some patches have been installed already, perform a full reset on the terminal to make the CMOS imager patch to be installed.

3. Note on “Copy Devices” tool

The Copy Devices tool is useful to deploy application software and patch files. Regardless of RoHS-compliant models or not, the Copy Devices tool shall be used by following the steps below:

1. All memories including Flash Disk on the target terminals must be cleared.
 2. The master terminal must have all software which shall be duplicated into the target terminals.
 3. Under this condition, execute the “Copy Devices” on the master terminal and then on each target terminals.
- If the master terminal has older patches than the target, the patches on the target terminals will be downgraded after executing the Copy Device. Moreover, the target terminals will have two kind software by the old and new patch files and may cause troubles due to the inconsistency. Service Pack 1.00 for the IT-3000 CMOS models and CMOS Patch 1.00 will be released to support the new CMOS imager modules. When the SP or the Patch is installed, in other words, the CAB file is extracted, new CMOS controller will be installed automatically by judging the kind of CMOS imager module. Therefore, the software which is installed in the Windows folder on RAM is different according to the integrated CMOS imager module and you need to copy Service Pack or Patch into FlashDisk and then execute the Copy Device. You need to set the Copy Device to send files not only in RAM but also in FlashDisk.

Be sure to check on Flash Disk and copy SP or Patch into Flash Disk.

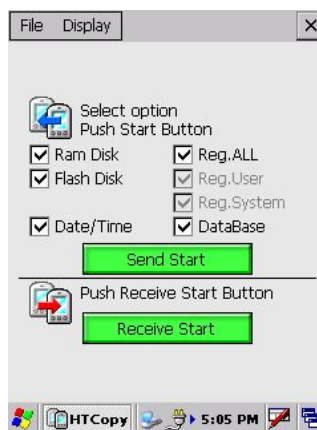


Fig 1 Example of Copy Device Menu

4. Inquiry

Inquiry about the content in this bulletin is handled by CASIO Tokyo for all the geographic areas with exception of European countries. All European countries except Russia are supported by CASIO Europe GmbH in Germany. If you are situated in the area, please contact CASIO Europe GmbH for any inquiry you may need.

Information in this bulletin is subject to change without a prior notice.

CASIO Tokyo Technical Support System

https://secure.casio.co.jp/system_en/techsupport/free/

CASIO Europe GmbH: Mr. Arne Reinelt

Europeht@casio.de

- End of the Bulletin -